



NiceHome

Catalogue 2009

Innovation and simplicity in the integrated management
of home alarm and automation systems.

Nice

Home Automation

Nice to meet You

Nice [nais]
1. Attractive, agreeable, pleasing, friendly, kind, courteous, solicitous.
2. Good, refined, charming.
3. Virtuous, exacting.

Nice [nais]
1. bello, grazioso, attraente, gradevole, simpatico, cortese, gentile, premuroso
2. buono, raffinato, squisito
3. onesto, retto, corretto

Nice [nais]
1. Beau, gracieux, attirant, joli, agréable, charmant, sympathique, aimable, gentil, charmant
2. Bon, raffiné, délicieux
3. Convenable, correct

Nice [nais]
1. amable, agradable, bonito, simpatico
2. cortese, gentil
3. onesto

Nice [nais]
1. schön, hübsch, anziehend, geschmackvoll, angenehm, sympathisch, höflich, freundlich, zuvorkommend
2. gut, raffiniert, erlesene
3. ehrlich, rechtschaffen, korrekt

Nice [nais]
w języku angielskim oznacza:
1. miły
2. przyjemny
3. ładny

Nice [nais]
1. хороший, приятный, милый, славный
2. хорошо сделанный, точный, удачно выполненный
3. изящный, сделанный со вкусом; элегантный

Index

NiceHome System

- 6|7 More than a simple alarm system
- 8|9 Easy to install, program, use
- 10|11 Professional products and a great number of satisfactory functions
- 12|13 Control all your home with a simple click
- 14|15 Peace and comfort
- 16|17 Details for the maximum peace and security
- 18|19 Versatile in the management of gates and entrances

20|21 **NiceHome products**

- 22|23 Control Units
- 24|26 Sirens
- 27|29 Keypads and Transmitters
- 30|39 Detectors and accessories

- 40|41 Nice for You!
Nice services dedicated to professionals

Nice presents NiceHome System,
the new alarm and central control systems
for the house, along with the traditional
automation system products.

Wireless & Nice Design:
Forget any complication!





A unique system, or rather, many systems. More than a simple alarm system.

NiceHome perfectly integrates with all Nice systems in order to offer you a higher level of comfort in your home. Nice NRC (Nice Radio Connection) radio control solution and the 100% wireless solar power used by Nice for Gate, Door and Screen systems allow you to avoid breaking the walls to place the traditional anaesthetic wiring.



NiceHome System is born great, in fact it can control not only the alarm systems, but also the whole range of Nice automations for gates, garages, awnings and rolling shutters, as well as irrigation and lighting systems and electrical loads.

For more information on Nice products, please request the Nice "Gate&Door" and "Screen" catalogues.



Any kind of gate and garage can be automated with Nice: light, heavy, for residential or intensive use. Nice has always got the right solution for you: you won't get wet when it rains, you won't have to leave your car on while you get off to open and close your gate and your garage; you won't have to worry about forgetting the gate open with your children or your dog that might run out on the street... In other words, less worries and troubles...



A simple click to control awnings and rolling shutters: Nice automation system works independently, even when you are not there, measuring the sunray intensity and the wind strength, and following your orders at the times you have decided. Nice offers simple and functional solutions, designed to increase the comfort of your house, and represents the ideal solution both in new buildings and in any kind of restoration work.



In big houses, offices, hotels and community blocks, with a great number of automations, you can save very much time activating all the automations in the building, or in different buildings connected among them, all together or in groups, being sure that everything is exactly as you want it.



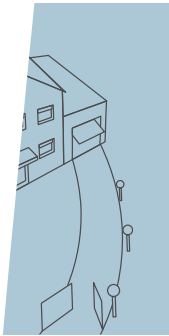
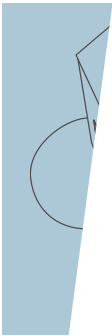
Do you think that lifting up or taking down the shutters of your shop every morning and every evening, sweating and dirtying your hands is not your favourite job? Installing a Nice automation is simple, quick, and increases the safety of the shutters.



If you want to control the access road to a block of flats or a firm there are many possible solutions, from the simplest to the most refined. Only those you gave your permission to will enter, and only in the days and times you have decided. Peace and comfort are guaranteed.



NiceWay modular radio control system can control up to 240 automations through its display. All in 16 cm³.





Professional products and a great number of satisfactory functions: NiceHome is the centre of your house.

Completely wireless or mixed solutions, with radio or wire connection, that guarantee extreme flexibility in the installation also where wiring is not possible. Now, realising a really customised system responding to the requirements of protection and comfort of each house is easier!



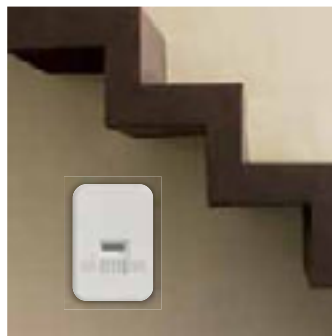
The advantages of NiceHome wireless systems: systems require little time to be installed, they are cheap and flexible

Wireless NiceHome solutions allow safe installations in very short times, even in the most complicated and frequent situations, as in case of interventions to plants that are not fitted for them. Creating a new system, enlarging it, adapting it to different requirements is very easy with NiceHome! The battery consumption implies far lower costs compared to the expenses your customers should meet in terms of brickwork and to the discomfort of having to lay wires everywhere: many considerable reasons to choose it!



A certainty for the professionals from Nice Group

Choosing Nice means guaranteeing the quality and assistance of a leading brand, capable of a great growth in terms of dimensions and range of products, and offering your customers the integrated control of all the automations of their homes without extra costs.



NiceHome preserves the beauty of every architecture

Putting all the elements of the traditional systems together in a single wireless control unit dramatically reduces the number and dimensions of the devices to install, minimising their visual impact. The radio system, eliminating all the physical connections between its various parts, avoids the need to pre-arrange the system during the phase of planning, as well as to carry out expensive and invasive brickwork or to lay wires in existing houses with ugly results.

Nice solutions for specialists

Nice has the right answers for those who want the most cutting-edge and reliable systems without complications: Nice has always planned and offered immediate solutions for the most diverse and specific requirements. An example of this can be found in the inside of the control unit, so neat and functional.

Power can be provided both through the electricity network and through rechargeable batteries

Whatever version you choose, NiceHome guarantees long life and the certainty that the detecting and signalling system will work also when power supply fails.



Easy and extremely rapid interventions

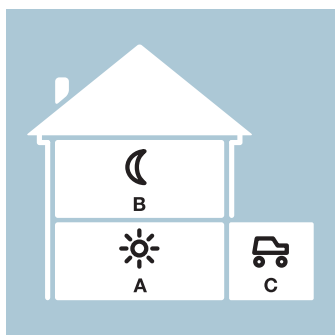
all elements are protected by a rotating removable box to have access to memory and SIM cards and allow easier connections – in the wired versions.

All the security you need, and much more.

The systems preventing the removal of the device are activated at every unauthorized intervention; the integrated GSM phone combiner and the siren set off also in case the power feed, telephone and electric lines fail, or the control unit is removed from its place.

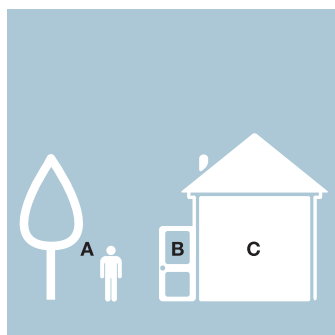
Control all your home with a simple click: your alarm system and automation integrated control together in a single system

NiceHome is a complete system, equipped with everything you need to protect your home and your family, and to operate all your home automations with the maximum simplicity.



Protection in homogeneous areas

NiceHome system can program up to 3 intervention zones to insert in the control unit. Also the small complete portable controls with 4 or 8 channels allow to activate or deactivate not only the 3 zones together, but also one of them of your choice at a time. The areas can be homogeneously divided, and this option can be useful when you want to protect a part of your house while keeping carrying out the normal activities in other parts of the house where the alarm is deactivated (i.e.: Zone A, rooms of the ground floor; Zone B, rooms of the first floor; Zone C, garage).



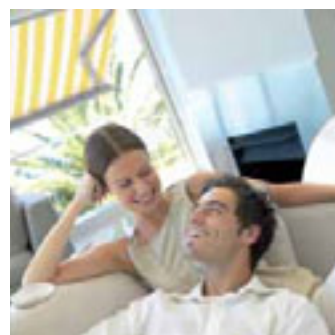
Protection in concentric areas

Thanks to the system evolution and to the availability of new technologies, the present trend allows to protect an area dividing it according to a concept of "concentric circles" (i.e.: Zone A, garden or terrace; Zone B, external doors and windows, Zone C, house indoors), in order to deter from possible housebreaking attempts before they take place (in the Zone A) with the voice messages emitted by the sirens, to activate the siren alarm at the first attempt at breaking in through doors and windows (Zone B), to call the police only when the internal detectors (Zone C) give notification of the housebreaking within the rest of the house.



Voice messaging

Deterrent messages emitted from the device within the protected area, giving prior notification of the activation of the alarm system, are very useful to discourage housebreaking attempts that, even if warded off by the subsequent alarm, may cause damages in the process. All NiceHome control units and sirens give the possibility to personally record a different deterrent message.



Just a click

The radio control, for example: you can operate the whole alarm system and each single automation or groups of automations (i.e. the rolling shutter of the living room; all the rolling shutters of the first floor; rolling shutters and awnings of the southern side; etc.) from the palm of your hand. The comfort of a home automation system for the price of the alarm system alone. Why not?

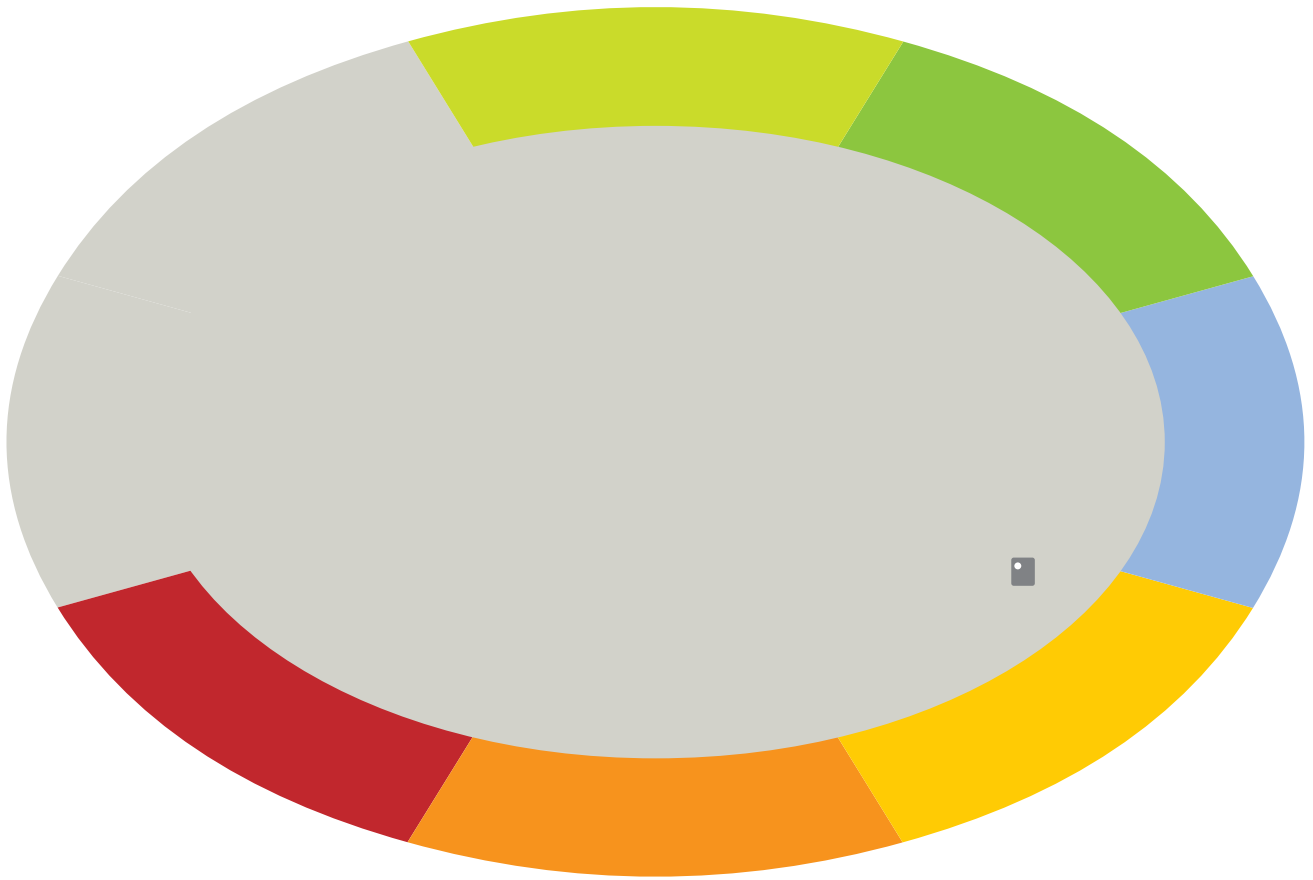
Bidirectional

A confirmation of the operations is given by the optic feedback



Nice: we have a thing for simple things

Nice is famous for its technologically advanced control systems with a functional and customised design. With NiceHome we have paid even more attention to the characteristics of being simple and easy to use, in order to create a complete automation and alarm system which is really easy to use and program.





Deter, protect, give notification

Deterrent voice messages from the control unit and outdoor siren discourage housebreaking attempts before they happen; in case of alarm, the effect is guaranteed, thanks to the loud sound from the sirens. The external and volumetric monitoring can be changed according to every covering requirement, both inside and outside the house, thanks to the wide range of sensors available.



All under control, even from a distance

You can communicate from a distance with the NiceHome control unit in order to control its state via GSM or PSTN call. The differentiated organization of the alarms gives a different notification of attempted approaches to the property, burglary or breaking of frames, intrusion in protected rooms, incipient fire or flood and other anomalous or potentially dangerous events. The user can call the control unit and activate the sound interception functions.



The system informs you

The non volatile memory of the system records the latest 200 events occurred; the user can give a label to each peripheral that allows to identify it on the differentiated display visualization. The opening sensors give you notice of the housebreaking attempts, while the volumetric sensors give notice of the presence of intruders within the house: each notifications made when the control unit is activated generates an alarm phone call and/or SMS communication indicating the single detector which has originated the alarm.

NiceHome protects you and itself: every detail is important for the maximum serenity.

Nice has paid great attention to every detail of NiceHome, integrating all the functions useful for guaranteeing the security of the users and their houses, and the perfect functioning of the system.



Be always serene

NiceHome adds more tranquillity to that offered by a traditional anti-intruder security system, with its anti-coercion and anti-assault functions.

The former allows to insert a code that simulates the deactivation of the system, excluding the local alarm system activation, while transmitting a call directly to the police station or to any other pre-set number.

The second allows to activate the external sirens in situations of possible danger only by pressing a button on the remote control.



Emergency call

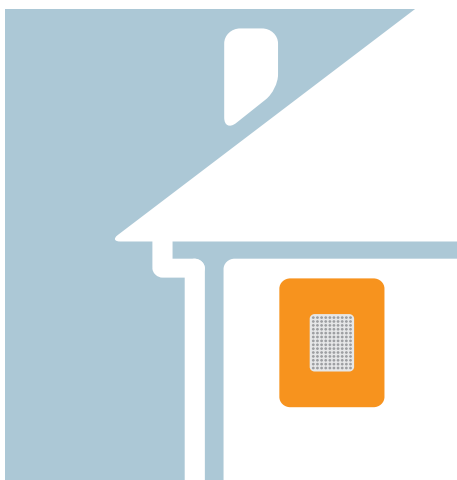
Each NiceHome control terminal, included the HSTX4 miniaturized pocket transmitter, gives you the possibility to program a direct call to the numbers in your address book in order to transmit a customized - voice or text - message with a request for help.



Fine particles and water sensors

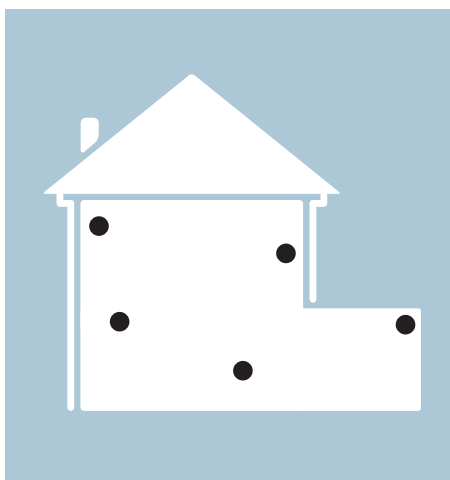
Every anomalous event regarding the leak of water or presence of smoke caused by incipient fire is detected by NiceHome which gives you prompt notification of that. Even if you are not in, you will immediately receive a notification on your mobile phone, on your office phone, or on other stored numbers of your choice.





Bidirectional transmission

NiceHome gives you a confirmation that the orders given have been executed, either through a light or sound notification on the control unit or on the external siren, or switching on a led on the remote controls, or even through a text message in case of activation via mobile.



Self-diagnosis

NiceHome continuously assesses the efficiency in the communication among all the components of the system, guaranteeing a perfect functioning and giving notification of any anomalous event. Of course, even the battery charge of every wireless device is kept under control and when the batteries need changing, a notification is given well in advance.



Integrated “Pet Immunity” function

NiceHome HSD motion detectors are equipped with the serial integrated Pet Immunity function, capable of recognising the presence of your little friends that might activate the alarm: a very useful function with no extra costs.



Freedom via radio: extremely versatile in the management of gates and entrances.

User-friendly and cutting-edge control systems that allow you to activate each system the way you prefer, through radio, touch card, or digital combination. Whatever you are used to and whatever your preferences, Nice can satisfy you.



Just a click

Small, thin and colourful, ideal to keep in your pocket, in your handbag or to use as key-rings, as ornaments or hung on a wall, they allow you to have all your home under your thumb! Nice offers a wide range of control systems: via radio, modular, rolling code, bimodal or with integrated transponder: you just have to choose!



Keypad, key or touch card

The HSKPS portable keypad can be the only visible element of your NiceHome system. Among Nice products for automation control you can find practical digital or lock selectors and proximity systems to go out and get in your house with the maximum security.



Automatic

HSCU NiceHome control units can regulate not only Nice alarm systems but also up to 16 automations or group of automations, giving to each automation the desired time and mode of use, allowing you to wake up with the sunlight, protect your flowers from the sunrays, or to open and close all your home at the time you want or when you are not in.





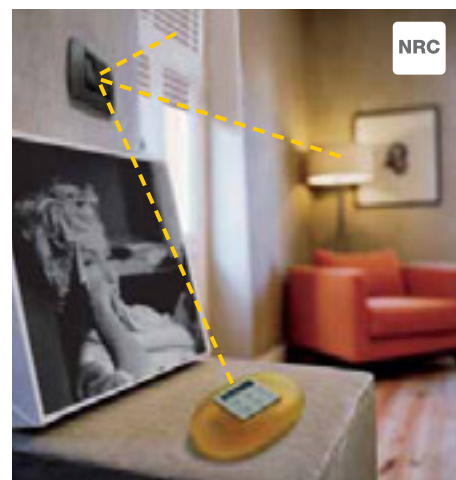
Hidden

Nice presents the hidden control: its miniaturized dimensions allow HSTT2L and all the miniaturised radio products of the new Tag radio line, to be installed inside the traditional wall plates or in very small spaces. They cannot be more unobtrusive...



Climatic

If the wind blows too strongly or the sun is too hot, Nice thinks about that: the wireless sun feed sensors instantly detect the weather conditions folding the awning in or rolling the shutters down even if you are not at home.



NCR radio technology: easy and rapid installation!

Nice Radio Connection (NCR) system makes the installation, programming and use of each automation easier, using the radio transmission. Thanks to this solution, the installation of any automation, both in new buildings and renovations, is a lot simpler and cheaper.

The system can connect portable and wall controls, control units, detectors, climate sensors and operators.



NiceHome products





So beautiful you can hide it under a staircase.

The HSKPS portable control keypad can be the only visible element in your house (not counting, of course, the detectors that, being radio controlled, can be placed in the most favourable places having a minor visual impact), and it can be easily moved where it is required.

Nice HSCU Wireless Control Unit



Control units that can be supervised and controlled from a distance with battery power supply for Dual Band and bidirectional radio-controlled alarm systems.

Exclusively for HSCU radio-transmitted wireless alarm systems, this is the best solution for the installation of residential alarm systems, integrated with wire-free, anti-danger and automation control functions, completely independent from the electric power supply. The supervised and scanned Dual Band radio transmission makes the system communications among the control unit, the detectors and alarm devices safer. The differentiated organisation of the alarms gives also a differentiated notification of the attempts of approaching the house, burglary or breaking of the frames, intrusion in protected rooms, incipient fire or flood, and other dangerous events. In case of alarm the control unit calls the pre-set telephone numbers transmitting specific messages related to the event. The user can call the control unit in order to control or modify its state, listen to the house noises, and give orders to electric devices, lights, automation and heating systems, etc. HSCU Wireless answers in a clear way, confirming and/or giving notification of new events. The system deterrent effect is guaranteed by powerful indoor and/or outdoor sirens (also with voice option), lights, activation of deterrents.

Code	Description
HSCU1GEN	Control unit for radio-controlled alarm systems, battery power supply (included). Equipped with PSTN or GSM telephone combiner
HSCU1EN	Control unit for radio-controlled alarm systems, battery power supply (included). Equipped with PSTN telephone combiner
HSPS1	Battery Pack 9 V (12 Ah)
HSA1	Cable and software for Control unit-Pc connection
HSA2	Adapter for RJ14 cable with terminal output

HSCU1GEN: with battery pack power supply. It controls up to 99 radio detectors and a number of alarm devices (various sirens and receivers) and allows to activate 16 house automation controls; it works through telephone land line and GSM network, calling up to 63 phone numbers to whom it transmits up to 6 voice messages and 17 text messages, as well as digital protocols when it is connected to a security station. Equipped with integrated 106 dB siren, with the possibility to deactivate it, and low intensity signal buzzer.

HSCU1EN: it is the same as the previous one, but without GSM module and related functions (text and voice messages).

Technical specifications

Power supply	Battery Pack 9 V (12 Ah)
Life span	About 2 years*
Radio-controlled alarm inputs	Up to 99 immediate, delayed, or AND programmable detectors, on 3 A-B-C insertion zones or 3 24-hour zones: panic, help, technical alarms
Radio-controlled anti-tampering function	Reception of tampering notification from each single detector - reception of supervision and low battery notification
Radio-transmitted alarm outputs	72 bit coded digital transmissions for alarm system control
Radio system anomalies	Continuous, simultaneous and programmable control of the two working frequencies
Event memory	Past 200 events
Timing	- Delayed programmable activation - Programmable delay time on each detector - General alarm span, 3 cycles of 3 minutes each, with 3 minutes break
Display	2x16 type display with the possibility to name each single peripheral (label)
Controls	20-key alphanumeric keypad
Sound power	106 dB alarm siren + buzzer with low intensity notification function
Acoustic notifications	Recordable voice messages for user's main communications
Voice option	Voice option with 125 pre-recorded sentences, available in various languages
Two-way radio transmission	Dual Band frequency (433 and 868 MHz) bidirectional digital communication
Radio range	100 m in an open space and without interferences; about 20 m indoors
Wire connection	PSTN (also ADSL) phone line
GSM module**	Quad-band, GSM 850/900/1800/1900 MHz
Working temperature	-10 ÷ +40 °C
Dimensions (WxDxH)	211x54x307 mm
Weight	2 kg

*Varying according to the conditions of usage and the type of system. **Only for HSCU1G version.

The rotating box protecting the control electronics can be removed in order to simplify possible maintenance interventions and access to the memory and SIM cards.



Nice HSCU Control Unit



Control units that can be supervised and controlled from a distance for Dual Band and bidirectional mixed radio-controlled and wired alarm systems.

HSCU is the most complete solution for the installation of residential alarm systems, integrated with anti-danger and automation control functions. The supervised and scanned Dual Band radio transmission makes the system communications among the control unit, the detectors and alarm devices safer. The differentiated organisation of the alarms gives also a differentiated notification of the attempts of approaching the house, burglary or breaking of the frames, intrusion in protected rooms, incipient fire or flood, and other dangerous events. In case of alarm the control unit calls the pre-set telephone numbers transmitting specific messages related to the event. The user can call the control unit in order to control or modify its state, listen to the noise of the house, and give orders to electric devices, lights, automation and heating systems, etc. HSCU answers clearly, confirming and/or giving notification of new events. The system deterrent effect is guaranteed by powerful indoor and/or outdoor sirens, also equipped with a voice option, turning on the lights, and radio activating further deterrents.

The (optional) buffer battery increases the system's safety, guaranteeing its functioning also in case of failing electric power supply.

HSCU1GCEN: requiring 230 V power supply, with support battery (not included). It controls up to 99 radio detectors and a number of wired detectors with dedicated power supply; it is equipped with radio/wire outputs for the alarm devices and for 18 house automation controls; it works through telephone land line and GSM network, calling up to 63 phone numbers to whom it transmits up to 6 voice messages and 17 text messages, as well as digital protocols when it is connected to a security station. Equipped with integrated 106 dB siren, with the possibility to deactivate it, and low intensity signal buzzer.

HSCU1CEN: it is the same as the previous one, but without GSM module and related functions (text and voice messages).

The box protecting the control electronics rotates to allow easier wire connections and access to the memory and SIM cards in the GSM version.

Code	Description
HSCU1GCEN	Control unit for mixed radio-controlled and wired alarm systems, 230 Vac power supply. Equipped with PSTN or GSM telephone combiner
HSCU1CEN	Control unit for mixed radio-controlled and wired alarm systems, 230 Vac power supply. Equipped with PSTN telephone combiner
B12V-C	12 V lead battery (2.2 Ah)
HSA1	Cable and software for Control unit-Pc connection
HSA2	Adapter for RJ14 cable with terminal output

Technical specifications

Power supply	230 Vac 50 Hz
Life span w/o power mains	36 h ±, with rechargeable lead battery 12 V 2.2 Ah (not included)
Power supply output	12 V cc (nominal) output, maximum 1.2 A
Radio-controlled alarm inputs	Up to 99 immediate, delayed, or AND programmable detectors, on 3 A-B-C insertion zones or 3 24-hour zones: panic, help, technical alarms
Wired alarm inputs	6 NC lines, programmable on 3 A-B-C insertion zones
Radio-controlled anti-tampering	Reception of tampering notification from each single detector - reception of supervision and low battery notification
Wired anti-tampering	3 NC Tamper lines (A-B-C zones) and opening/removal protection of the control unit
Radio-controlled alarm outputs	72 bit coded digital transmissions for alarm system control
Wired alarm outputs	1 for siren control 12 V 0.5 A - 1 for self supplied siren 12; 1 for control unit siren; R1 and R2 = programmable relays with various functions
Control inputs	1 for additional electronic/electromechanical inserter connection
Radio system anomalies	Continuous, simultaneous and programmable control of the two working frequencies
Event memory	Past 200 events
Timing	- Delayed programmable activation - Programmable delay time on each detector - General alarm span, 3 cycles of 3 minutes each, with 3 minutes break - Programmable 24 hour clock for control execution
Display	2x16 type display with the possibility to name each single peripheral (label)
Controls	20-key alphanumeric keypad
Sound power	106 dB alarm siren + buzzer with low intensity notification function
Acoustic notifications	Recordable voice messages for main user's communications
Voice option	Voice option with 125 pre-recorded sentences, available in various languages
Two-way radio transmission	Dual Band frequency (433 and 868 MHz) bidirectional digital communication
Radio range	100 m in an open space and without interferences; about 20 m indoors
Wire connection	PSTN (also ADSL) phone line
GSM module*	Quad-band, GSM 850/900/1800/1900 MHz
Working temperature	-10 ÷ +40 °C
Dimensions (WxDxH)	211x54x307 mm
Weight	1.2 kg

*Only for HSCU1GC version.



Nice HSSO Outdoor Wireless Siren



Dual Band radio-controlled outdoor alarm sirens with integrated flashing light.

The extremely accurately designed box, with antifoam properties and protection against opening, removal from the wall and burglary attempts, contains 2 outdoor siren models which are fundamental in an alarm system. The considerable sound power is a great deterrent while the flashing light allows to locate the position easily. The voice deterrent models do not disturb neighbours, but surprise and warn off intruders.

All models give a confirmation of the activation and deactivation of the control unit through flashing light and adjustable sound.

HSSO: bidirectional wireless siren with battery pack. 3-year life span, varying according to use. 116 dB sound power, integrated flashing light and possibility to insert voice card for alert voice messages. A possible tampering of the siren alarms the control unit.

HSSOV: the card allows to record alarm/deterrent voice messages that will be repeated before the siren sound, enhancing its deterrent effectiveness.

Code	Description
HSSO	Dual Band bidirectional radio-controlled outdoor siren, Battery power supply (included). 116 dB sound power, with integrated flashing light
HSSOV	Voice message card for HSSO siren
HSPS1	Battery Pack 9 V (12 Ah)

Technical specifications

Power supply	Battery Pack 9 V (12 Ah)
Average life span*	About 3 years
Supervision	Approximately every 20 minutes
Sound power	116 dB at a distance of 1 m
Two-way radio set	Dual Band frequency (433 and 868 MHz) bidirectional digital communication
Range	100 m in an open space and without interferences; about 20 m indoors
Anti-tampering alarm	Anti-tampering alarm transmission in case the box is opened and/or removed from the wall and/or in case of aggressive housebreaking attempts
Working temperature	-25 ÷ +55 °C
Dimensions (WxDxH)	211x66x307 mm
Weight	2.5 kg

*Varying according to the conditions of usage and the type of system.

Nice HSSOC Outdoor Siren



Outdoor alarm sirens with integrated flashing light.

The extremely accurately designed box, with antifoam properties and protection against opening, removal from the wall and burglary attempts, contains 2 outdoor siren models which are fundamental in an alarm system. The considerable sound power is highly deterrent while the flashing light allows to locate its position easily. The voice deterrent models do not disturb neighbours, but surprise and warn off intruders.

All models give a confirmation of the activation and deactivation of the control unit through flashing light and adjustable sound.

HSSOC: wired siren, connected to the control unit which provides it with 12 V power supply, with internal support battery (not included). 116 dB sound power, built-in flashing light requiring an internal battery that can be recharged by the control unit. It allows a considerable saving, in case the wire connection with the control unit is simple.

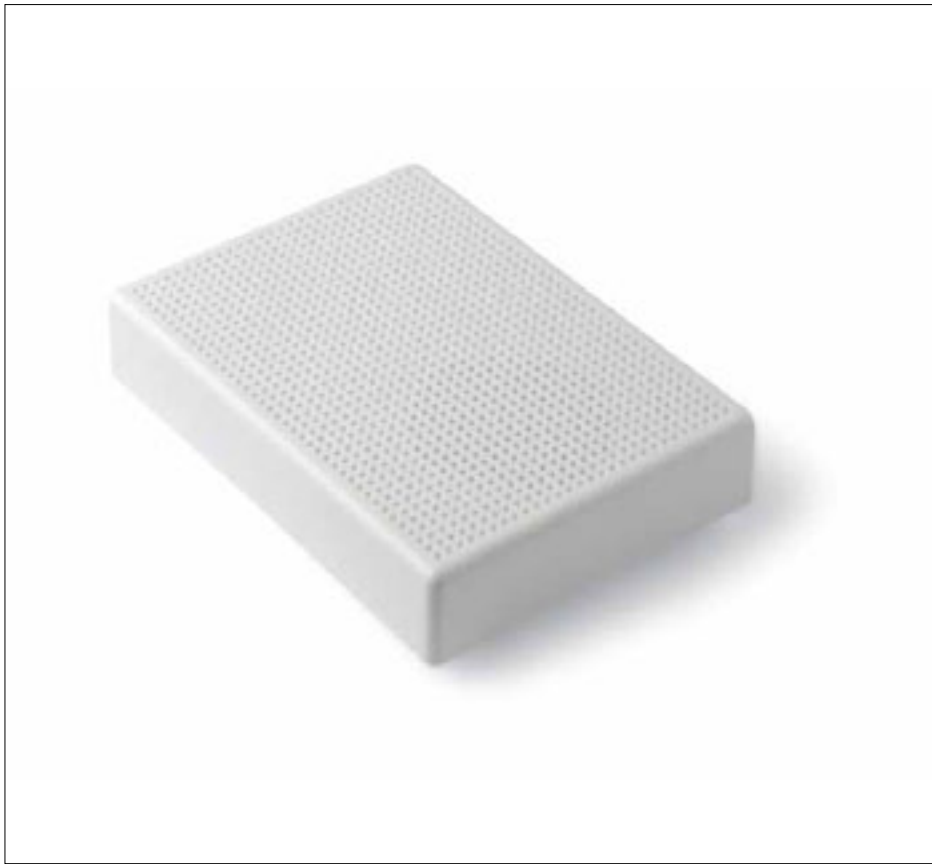
Code	Description
HSSOC	Bidirectional outdoor siren with wire connection to the control unit. 116 dB sound power, with integrated flashing light for control units HSCU1GC and HSCU1C
B12V-C	12 V lead battery (2.2 Ah)

Technical specifications

Power supply	12 Vcc wire*
Sound power	116 dB a 1 m
Working temperature	-25 ÷ +55 °C
Dimensions (WxDxH)	211x66x307 mm
Weight	1.5 kg

*Requiring 12 V 2.2 Ah rechargeable battery not included.

Nice HSSI Internal Siren



HSSI Indoor wireless alarm sirens.

HSSI it has been created to be used indoor. 114 dB sound power, with 3 minute timing and capable to give notification of the activation/deactivation of the system through a low intensity (leave out option) sound. Equipped with protection against opening and removal from the wall.

Code	Description
HSSI	Radio controlled indoor siren, battery power supply (included). 114 dB power sound
B1,5V-C	Alkaline battery 1.5 V size C

Technical specifications

Power supply	3 alkaline batteries 1.5 V size C
Life span	About 2 years
Sound power	114 dB at a distance of 1 m
Radio reception	433 MHz quartz controlled frequency digital communication
Radio range	100 m in an open space and without interferences; about 20 m indoors
Working temperature	-10 ÷ +40 °C
Dimensions (WxDxH)	153x37x111 mm
Weight	700 g

Nice HSKPS KeyPad



HSKPS Dual Band and bidirectional radio-controlled control key-pad, wall-hung or portable.

HSKPS is a bidirectional keypad used to activate/deactivate the alarm control units and related automations, with a visual confirmation of the operation carried out and service notifications given through Led or buzzer, such as in case of protected doors or windows which are still open or low battery.

Button for the system status control.

Anti-assault function that deactivates in case of threat, and simultaneously forwards the phone calls. Programmable button with anti-panic function (direct activation of the sirens), or for automation or manual controls.

Code	Description
HSKPS	Bidirectional and Dual Band radio keypad for the control of automation and alarm system control units (battery included)
HSKCT	Table support/shockproof protection for HSKPS portable keypad
B1,5V-A	Alkaline battery 1.5 V size AAA

Technical specifications

Power supply	3 alkaline batteries 1.5 V size AAA
Life span	About 2 years
Display and controls	8 Led for control functions and buzzer
Radio reception	Dual Band frequency (433 and 868 MHz) digital communication
Radio range	100 m in an open space and without interferences; about 20 m indoors
Working temperature	-10 ÷ +40 °C
Dimensions (WxDxH)	100x23x100 mm
Weight	180 g

Nice HSTX8 Transmitter



HSTX8 bidirectional 8-channel transmitter 433 MHz, Rolling Code.

Alarm system activation/deactivation buttons; partial activation (programmable also for direct control of HSTT receiver).

Programmable button with emergency call or anti-panic function (direct activation of the sirens) or for control of alternative partial activation (B+C).

4 programmable buttons for the control of 4 automations, both individually and in groups, or for other manual controls.

Bidirectional: after dialling the "ON", "OFF" and "Partial ON" controls (orange Led turns on), the Led shows the result (green = OFF; red = ON or Partial ON).

Small thin and ergonomic, able to be fastened to a key ring.

Code	Description
HSTX8	8-channel transmitter; 4 channels are for the alarm system, 4 are for the automation control
B3VC	Lithium battery 3 V (CR2032)

Technical specifications

Power supply	Lithium battery 3 V (CR2032)
Average life span	About 2 years
Frequency	433 MHz
Range	100 m in an open space and without interferences; about 20 m indoors
Two-way radio transmission	Bidirectional digital communication
Working temperature	-20 ÷ +55 °C
Dimensions (WxDxH)	36x10x88 mm
Weight	27 g

Nice HSTX4 Transmitter



HSTX4 4-channel bidirectional transmitter 868 MHz, Rolling Code.

Alarm system activation/deactivation buttons; partial activation.

Programmable button with emergency call or anti-panic function (direct activation of the sirens), or for control of alternative partial activation (B+C).

Bidirectional: after dialling the "ON", "OFF" and "Partial ON" controls (orange Led turns on), the Led shows the result (green = OFF; red = ON or Partial ON).

Small and ergonomic, it can be fastened to a key ring.

Code	Description
HSTX4	4-channel radio transmitter for alarm systems
B3VC	Lithium battery 3 V (CR2032)

Technical specifications

Power supply	Lithium battery 3 V (CR2032)
Average life span	About 2 years
Frequency	868 MHz
Range	100 m in an open space and without interferences; about 20 m indoors
Two-way radio transmission	Bidirectional digital communication
Working temperature	-20 ÷ +55 °C
Dimensions (WxDxH)	42x13x50 mm
Weight	16 g

Nice HSDID11 Detector



HSDID11 Dual Band radio-controlled indoor detector with magnetic contact for detection of door and window opening.

HSDID11 is a supervising magnetic contact for intrusion protection of doors and windows, with additional wired input for differentiated alarms (NC/NO opening/input), impulse counter and incorporated anti-burglary sensor. Equipped with “open door” notification function.

It works with a 9 V battery and it is self-protected against opening and removal.

Over two years of average life span, variable according to the conditions of usage.

A notification of low battery power is given well in advance, both locally by Led and transmitting via Radio to the control unit.

Code	Description
HSDID11	Detector with magnetic contact and second contact input (NC or impulse counter); single or differentiated alarm complete of support set. Anti-burglary sensor. White colour
HSDID11CB	Detector with magnetic contact and second contact input (NC or impulse counter); single or differentiated alarm complete of support set. Anti-burglary sensor. Brown colour
B9V-B	9 V alkaline battery (GP1604A)

Technical specifications

Power supply	9 V alkaline battery (GP1604A)
Average life span	About 2 years
Supervision	Approximately every 40 minutes
Display and controls	The Led turns on giving confirmation of each alarm
Radio transmission	Dual Band frequency (433 and 868 MHz) digital communication
Radio range	100 m in an open space and without interferences; about 20 m indoors
Working temperature	-25 ÷ +55 °C
Dimensions (WxDxH)	33x31x135 mm
Weight	120 g

Nice HSDIM11 Detector



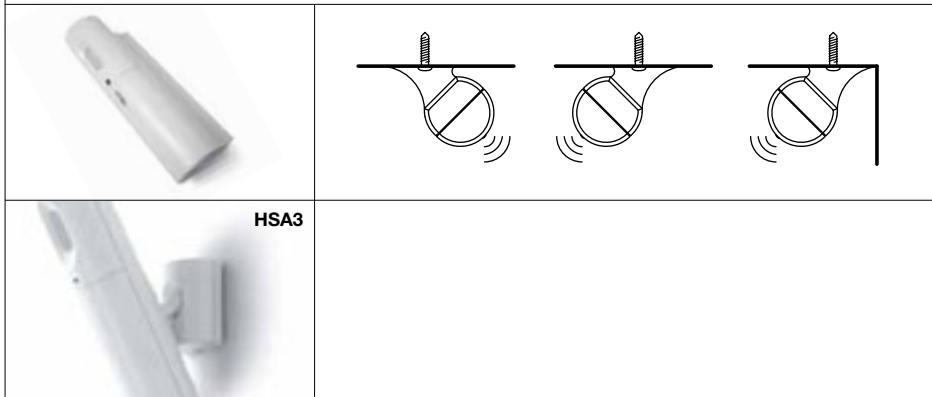
HSDIM11 Dual Band radio-controlled infrared detector with volumetric lens; it detects and give notification of possible movements within the protected area, up to 10 m and with an angle of 90°.

Supervising 100% wireless infrared passive detector of small dimensions. It is self-protected against opening and removal.

Wired NC input for the connection of magnetic contacts and/or for rolling shutters detectors with differentiated alarms (volumetric/NC input) for a double protection.
It works with a 9 V battery.

Possibility to detect cover on two levels, up to 5 or 10 meters.
A notification of low battery power is given well in advance, both locally by Led and transmitting via Radio to the control unit.

Over two years of average life span, variable according to the conditions of usage.



Code	Description
HSDIM11	Infrared detector with volumetric lens, with second contact input (NC or impulse counter); single or differentiated alarm complete of angular support. Anti-burglary sensor
HSA3	Joint for HSDIM11 detector
B9V-B	9 V alkaline battery (GP1604A)

Technical specifications

Power supply	9 V alkaline battery (GP1604A)
Average life span	About 2 years
Supervision	Approximately every 40 minutes
Display and controls	The Led turns on giving confirmation of each alarm
Radio transmission	Dual Band frequency (433 and 868 MHz) digital communication
Radio range	100 m in an open space and without interferences; about 20 m indoors
Working temperature	-25 ÷ +55 °C
Dimensions (WxDxH)	33x31x135 mm
Weight	120 g

Nice HSDIM12 Detector



HSDIM12 Dual Band radio-controlled infrared detector with vertical curtain lens; for the protection of doors and windows.

HSDIM12 is a supervising volumetric curtain detector having small dimensions and suitable for the protection of doors and windows, even outdoors (in protected areas); it detects movements in front of the narrow sensor band. It works with a 9 V battery and it is self-protected against opening and removal. It is a unique product, equipped with wired NC input for the connection of magnetic contacts and/or for rolling shutters detectors with differentiated alarms (volumetric/NC input) for a double protection. The average life span is over two years, variable according to the conditions of usage. Possibility to detect cover on two levels, up to 3 or 6 meters.

Code	Description
HSDIM12	Infrared detector with curtain lens and second input contact (NC or impulse counter); single or differentiated alarm. Anti-burglary sensor. White colour
HSDIM12CB	Infrared detector with curtain lens and second input contact (NC or impulse counter); single or differentiated alarm. Anti-burglary sensor. Brown colour
B9V-B	9 V alkaline battery (GP1604A)

Technical specifications

Power supply	9 V alkaline battery (GP1604A)
Average life span	About 2 years
Supervision	Approximately every 40 minutes
Display and controls	The Led turns on giving confirmation of each alarm
Radio transmission	Dual Band frequency (433 and 868 MHz) digital communication
Radio range	100 m in an open space and without interferences; about 20 m indoors
Working temperature	-25 ÷ +55 °C
Dimensions (WxDxH)	33x31x135 mm
Weight	120 g

Nice HSDIM21 Detector



HSDIM21 radio-controlled infrared detector with an indoor volumetric lens; it detects possible movements within the protected area, up to 12 m with an angle of 120°.

Supervising volumetric infrared motion detector with adjustable sensitivity, impulse counter, self-protection against opening and removal.

A notification of low battery power is given well in advance, both locally by Led and transmitting via Radio to the control unit.

Over two years of average estimated life span.

Code	Description
HSDIM21	Wireless infrared volumetric detector
B1,5V	Alkaline battery 1.5 V size AA

Technical specifications

Power supply	3 alkaline batteries 1.5 V size AA
Average life span	Estimated over two years
Supervision	Approximately every 40 minutes
Display and controls	Led lighting to notify every alarm. Buzzer for acoustic signals
Used technology	Passive infrared detection
Adjustments	4 levels range, temperature compensation
Redundant alarm inhibition	2 minutes with retrigger
Radio transmission	Dual Band frequency (433 and 868 MHz) digital communication
Radio range	100 m in an open space and without interferences; about 20 m indoors
Working temperature	-25 ÷ +55 °C
Dimensions (WxDxH)	78x47x152 mm
Weight	320 g

Nice HSDIM22 Detector



HSDIM22 double technology volumetric detector, via radio; it reveals possible motions in indoor area, up to 12 m and with an opening angle of over 90°.

HSDIM22 is a supervising double technology (infrared + MW radar) volumetric motion detector; equipped with adjustable sensitivity, impulse counter, self-protection against opening and removal. Maximum safety in movements detection: double control over the intruder to reduce improper alarms to the minimum and to further improve the safety features, with virtual immunity of small animals passage.

A prompt notification of low battery power is given well in advance, both locally by Led and transmitting via Radio to the control unit.

The batteries guarantee an average estimated life span of over two years.

Code	Description
HSDIM22	Wireless double technology volumetric detector
B1,5V	Alkaline battery 1.5 V size AA

Technical specifications

Power supply	3 alkaline batteries 1.5 V size AA
Average life span	Estimated over two years
Supervision	Approximately every 40 minutes
Display and controls	Two-coloured Led for IR and MW signaling and alarm confirmation. Buzzer for acoustic signals
Used technology	Passive infrared detections confirmed by a microwaves detector with doppler effect
Adjustments	4 levels range, temperature compensation; microwaves detector sensitivity and intervention time
Redundant alarm inhibition	2 minutes with retrigger
Radio transmission	Dual Band frequency (433 and 868 MHz) digital communication
Radio range	100 m in an open space and without interferences; about 20 m indoors
Working temperature	-25 ÷ +55 °C
Dimensions (WxDxH)	78x47x152 mm
Weight	390 g

Nice HSDOM21 Outdoor Detector



HSDOM21 double technology volumetric detector, via radio, to be used outdoors. It reveals possible motions in indoor area, up to 12 m and with an opening angle of over 90°.

HSDOM21 is a supervising double technology (infrared + MW radar) volumetric motion detector; equipped with adjustable sensitivity, impulse counter, self-protection against opening and removal.

Maximum safety in movements detection: double control over the intruder to reduce improper alarms to the minimum and to further improve the safety features, with virtual immunity of small animals passage.

A prompt notification of low battery power is given well in advance, both locally by Led and transmitting via Radio to the control unit.

The batteries guarantee an average estimated life span of over two years.

Code	Description
HSDOM21	Wireless double technology volumetric detector. To use outdoors
B1,5V	Alkaline battery 1.5 V size AA

Technical specifications

Power supply	3 alkaline batteries 1.5 V size AA
Average life span	Estimated over two years
Supervision	Approximately every 40 minutes
Display and controls	Two-coloured Led for IR and MW signaling and alarm confirmation. Buzzer for acoustic signals
Used technology	Passive infrared detections confirmed by a microwaves detector with doppler effect
Adjustments	2 levels range, temperature compensation; microwaves detector sensitivity and intervention time
Redundant alarm inhibition	2 minutes with retrigger
Radio transmission	Dual Band frequency (433 and 868 MHz) digital communication
Radio range	100 m in an open space and without interferences; about 20 m indoors
Protection level	IP 65
Working temperature	-25 ÷ +55 °C
Dimensions (WxDxH)	84x49x158 mm
Weight	430 g

Nice HSDID01 Detector



HSDID01 radio controlled volumetric detector for window breaking.

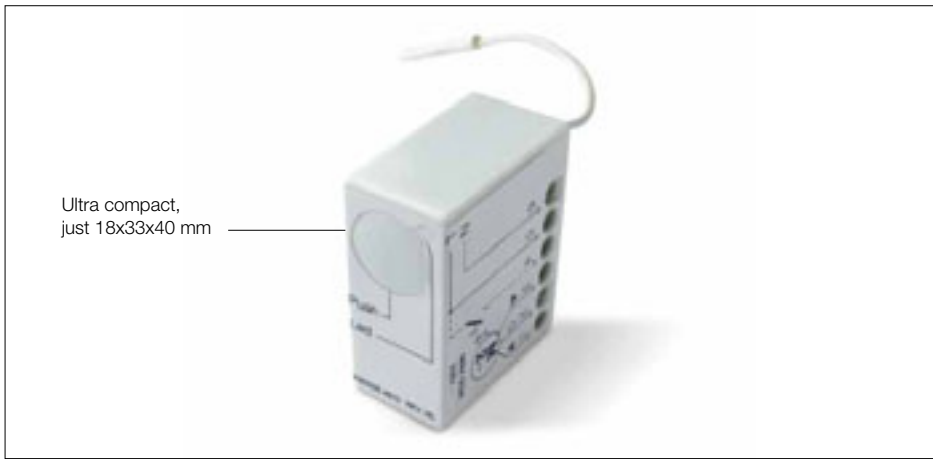
HSDID01 is equipped with a microphone detecting the sound frequencies produced by the breaking of a window pane. It is therefore useful to integrate the protection of glass frames in case the intruder should break in through the pane without opening the frame, and therefore without the intervention of magnetic contacts. It is protected against the opening of the box and it works with a 9 V standard battery for approximately two years, that can vary according to the conditions of usage.

Code	Description
HSDID01	Window pane breaking volumetric detector
B9V-B	9 V alkaline battery (GP1604A)

Technical specifications

Power supply	9 V alkaline battery (GP1604A)
Average life span	About 2 years
Display and controls	Endurance, alarm and functioning tests signalled through Led
Radio transmission	Dual Band frequency (433 and 868 MHz) digital communication
Radio range	100 m in an open space and without interferences; about 20 m indoors
Working temperature	-10 ÷ +40 °C
Dimensions (WxDxH)	108x44x80 mm
Weight	166 g

Nice HSTT2 Miniaturized Receivers



HSTT2 433 MHz miniaturized recessed receivers for electrical and motor load control for the automation of rolling shutters and blinds.

HSTT2L can work with any electric switch up to a load of 3 A and 230 V, to radio control the orders coming from the NiceHome system for lighting, heating and irrigation systems, boilers and all other Nice automations for gates, garages, awnings and rolling shutters (**HSTT2N**). It can be installed in very small places or placed inside a 503 standard box, with any front plate, safeguarding the beauty and style of the installation. They are further equipped with input for the connection with an external wired switch.

Code	Description
HSTT2L	Single-channel miniaturized radio receiver for electrical load control
HSTT2N	Two-channel miniaturized radio receiver for electrical engine control in two directions (opens and closes), for rolling shutters and blinds

Technical specifications

Power supply	120 or 230 Vac, 50/60 Hz; limits: 100 ÷ 255 Vac
Maximum output current	3 A
Radio transmission	Quartz-controlled 433 MHz digital communication
Working temperature	-20 ÷ 55 °C
Dimensions (WxDxH)	18x33x40 mm
Weight	20 g

Nice HSDIS01 Detector



HSDIS01 Dual Band radio controlled detector for volatile fine particles.

HSDIS01 detects possible concentrations of volatile fine particles caused by incipient fire, through a photo-optic test of the air, giving local alarm notification through a buzzer and the Led on the device, radio transmitting it simultaneously to the control unit and/or the receiver.

It is active 24 hours a day and is equipped with a control and self diagnosis device that indicates possible anomalies in the functioning due to the presence of fine particles in the air and their subsequent sedimentation on the sensitive part.

Notification is given through Led or alarm buzzer.

Code	Description
HSDIS01	Volatile fine particle detector
B9V-B	9 V alkaline battery (GP1604A)

Technical specifications

Power supply	9 V alkaline battery (GP1604A)
Average life span	About 2 years
Supervision	Approximately every 40 minutes
Display and controls	Notification through Led
Protected volume	Typical 6x6 m 3 m high; larger or not square rooms require more detectors
Radio transmission	Dual Band frequency (433 and 868 MHz) digital communication
Radio range	100 m in an open space and without interferences; about 20 m indoors
Working temperature	-20 ÷ +55 °C
Dimensions (ØxA)	106x60 mm
Weight	100 g

Nice HSDIW01 Detector



HSDIW01 water detection probe.

HSDIW01 detects the presence of liquids at the pre-set height, activating the transmission to the control unit and/or the radio receiver.

This device, very easy to install, is connected through 2 wires to the NO terminal of the HSDID11 detector.

It guarantees a 24-hour protection.

Code	Description
HSDIW01	Water detection probe

Technical specifications

Power supply	Requires connection to a compatible sensor
Working temperature	-20 ÷ +55 °C
Dimensions (WxDxH)	35x15x80 mm
Weight	120 g

Nice HSRT Radio Repeater



HSRT radio signal repeater/amplifier, 230 V.

The ideal solution for complex indoor locations characterised by a reduced radio reception due to long distances and/or internal separating walls (particularly made of bricks, stone or reinforced concrete); HSRT receives and repeats in Dual Band all the radio signals of a NiceHome alarm system allowing a considerably improved reception.

HSRT is very flexible and is equipped with a device notifying when the electricity network is unavailable and with two inputs (NA and NC) for connecting the repeater to other sensors through wire connection: all the events are transmitted to the control unit.

Code	Description
HSRT	Radio signal repeater/amplifier requiring a 230 V power supply
B6V-A	6 V lead battery (1.2 Ah)

Technical specifications

Power supply	230 Vac
Life span without power mains	About 3 days
Displays	Green Led for presence - red Led, transmission and turned on system warning
Radio transmission	Digital bi-directional communication, dual band frequency (433 and 868 MHz)
Radio range	100 m in an open space and without interferences; about 20 m indoors
Working temperature	-10 ÷ +40 °C
Dimensions (WxDxH)	170x52x93 mm
Weight	1.2 kg

Nice HSMO Teleservice Modem



HSMO Tele Service Modem - Remote control for HSCU control units.

The installer of the system can control the NiceHome HSCU control units from a distance, through the Tele Service Modem, connected to the telephone land line and to the personal computer, enabling him to read its memory and carry out all the programme and modification operations via telephone as if he were on the spot.

HSMO is important and easy to use for an expert installer because it improves the customer service avoiding often useless and expensive interventions on the spot.

Code	Description
HSMO	Modem for HSCU control units completed of "Teleservice" software and connection cables
B6V-A	6 V lead battery (1.2 Ah)
HSA1	Cable and software for Control unit-Pc connection

Technical specifications

Power supply	230 Vac, 50/60 Hz
Absorbed output	<0.9 W in stand-by; <4 W in recharging battery
Emergency power supply	With 6 V rechargeable lead battery, 1.2 Ah (optional)
Life span without power mains	About 3 days depending on the intensity of use
PSTN interface	RJ45 connector
USB interface	Type B connector, compatible with USB rev. 1.1
Protection level	IP40 (with container intact)
Working temperature	-10 ÷ 40 °C
Dimensions (WxDxH)	162x120x83 mm (except cables)
Weight	700 g

Nice for You!

Nice services dedicated to professionals.

A better service to improve the quality of your work
and guarantee the satisfaction of your customers.



The Nice Idea

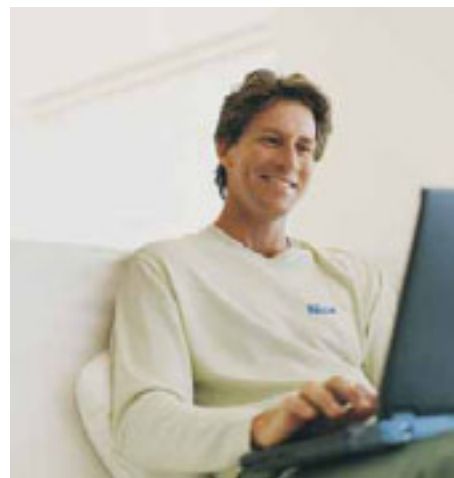
Improving people's quality of life simplifying everyday's activities. As one of the most important names in the field of Home Automation at international level, Nice develops, produces and merchandises alarm and automation systems for gates, garage doors, road barriers, awnings, rolling shutters and solar screens for residential, commercial and industrial buildings.

Nice offers you the security to get in and out freely, satisfying your need for comfort with its functional and beautifully designed products, to allow you to fully enjoy your home.



Security for everyone

The new European Machinery Directive and the European regulations on security can be confusing even for the most expert installer. He is in fact obliged to carry out a series of tests, verifications, audits complying with the regulations on each installed system, and to draw up the relative documents. Nice puts itself at your service to help you perform more easily all the prescriptions envisaged by the Machinery Directive.



Nice Service

In order to ensure a complete customer service also in the post-sale phase, Nice guarantees an efficient and timely service also online on the website:

www.niceservice.com

Here, Nice customers can consult an interactive up-to-date and detailed catalogue on the spare parts and make their orders by simply filling in the form available online, thus reducing to the minimum the possibility of mistake and saving time.

Moreover, updated technical information will always be available online exclusively for the professionals, who will have the possibility to consult and download the installation manuals and price lists, as well as information on the regulations in force and forms for the issue of declarations of compliance.

NiceHome Teleservice telephone diagnosis and assistance services speed up the interventions avoiding expensive visits on the spot.



Nice informs you

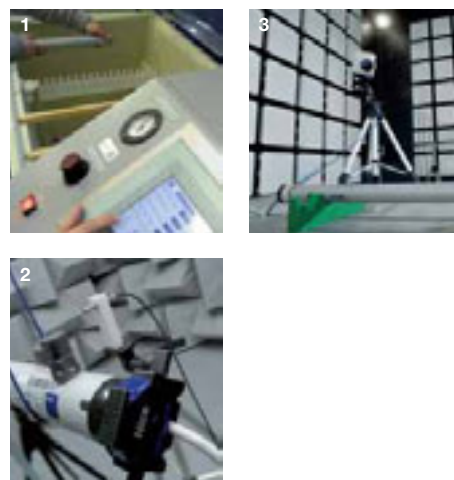
In order to build up an even stronger relationship with the professionals and to provide a solid and thorough preparation, Nice offers training courses on products, installation techniques, programming and updates. A particular attention and further study is dedicated to the European regulations in force, in order to make the drawing up of the declaration of compliance easier and to guarantee the full safety of the automation systems installed. And if you need an immediate answer to any doubt on the installation, the telephone assistance technical service is always active. Save money and time for your update!



Nice Quality

Nice has made considerable investments to guarantee increasingly higher quality levels that not only comply with the regulations and directives, but also allow a real continuous improvement of the product. Every day, tests and controls are carried out in our internal laboratory, in order to guarantee the reliability of the products currently available and to create new, more effective products:

- **Semi-Anechoic Chamber**
- **Acoustic chamber**
- **Climatic chamber**
- **Saline fog**
- **Chamber for particle penetration tests.**



- 1.** Saline fog test - detail of KeyKratos touch screen display.
- 2.** Testing the vibrations emitted by the tubular engine in acoustic chamber.
- 3.** Aerial for ERP emission test in semi-anechoic chamber.

Concept
Blu

Product Design
Roberto Gherlenda

Photo
Blu

Printed by
AGCM



The information
shown in this publication
is purely indicative.
Nice reserves the right
to make any modifications
to the products as it sees fit.

A Nice Place

Gallery: come and see
the Nice headquarters at the site
www.niceforyou.com/gallery.html



Nice Headquarters Oderzo
Covered area: 12.000 mq
14.000 pallet locations
150 underground car park spaces
Relax area
Indoor garden
Gym
Bar
Project: Architectural Carlo Dal Bo

Click...

Nice will take care of it!

With a single Nice transmitter the alarm systems and automations for gates, garage, awnings and rolling shutters, as well as lighting and irrigation, are always under control.



NiceLoveEarth

Nice cares for the environment.
Using natural paper it avoids excessive
use of raw materials and forest exploitation.
Waste is reduced, energy is saved
and climate quality is improved.



Nice SpA
Oderzo TV Italia
Ph. +39.0422.85.38.38
Fax +39.0422.85.35.85
info@niceforyou.com

Find out more about Nice
products and services on the website:
www.niceforyou.com